

INSTALLATION INSTRUCTION AND EXAMPLES OF USE

MADE IN ITALY

www.illunaluze.it

www.ezon.io

SODIO



Product code:
9.000.050 | 9.000.027

Sodio is made in accordance with the provisions of the CEI EN 60598-1 standard and complies with the EMC directive 89/336 EEC and with the directive 72/23 EEC - 93/68 EEC - 2002/95/EC

CE  IP20

Installation and use instructions

The safety of this appliance is guaranteed only by correctly consulting these instructions: it is therefore necessary to keep them.

Illunaluze reserves the right to make technical changes at any time.

Illunaluze declines any responsibility for products modified without prior authorization.

WARNINGS:

This luminaire is equipped with an LED source and has been tested according to the current IEC 62471 or IEC/TR 62778 regulations (photobiological safety of lamps) and has been classified as follows: LED1.

The replacement of the light source and battery contained in this lighting system must be carried out exclusively by Illunaluze.

For information contact Illunaluze.

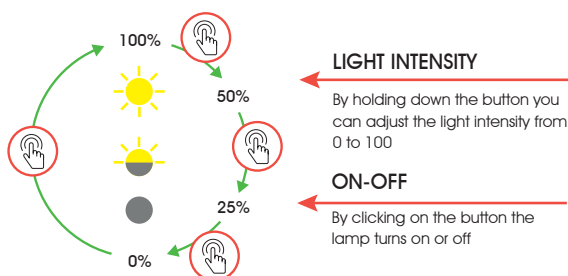
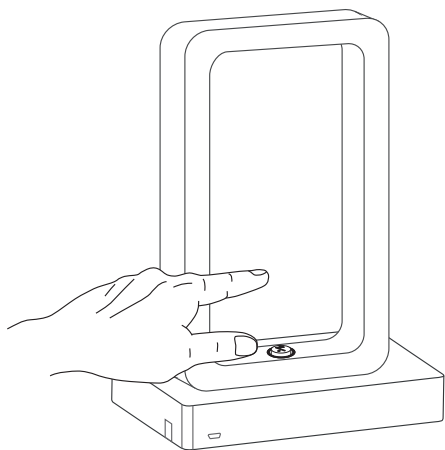
Clean with a soft cloth. Avoid contact between liquids and electrical components.

This appliance is equipped with a rechargeable battery: do not expose to excessive heat such as hot surfaces or direct sunlight to avoid overheating of the battery.

To start..

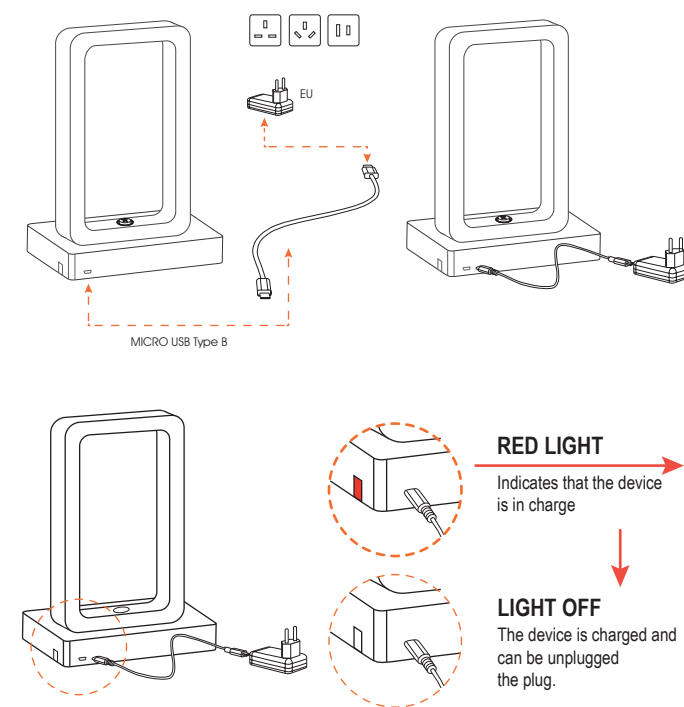
Sodio works with rechargeable Li-ion batteries so there is no need for sockets as soon as it is removed from the packaging it can be accessed and used immediately.

Sodio can be turned on, off or dimmed directly from the appropriate button on the lamp or through the APP only after configuring it.



Recharging the battery

To recharge the lamp you need a MICRO Type B | cable USB 2.0 and a USB power supply (2.0 1A recommended) - NOT INCLUDED



INSTALLATION INSTRUCTION AND EXAMPLES OF USE

MADE IN ITALY

www.illunaluce.it

SODIO

The **ezone.io system** can be managed and programmed through the ezone.io APP, available for iOS and Android and downloadable for free from the relevant store.





DOWNLOAD APP

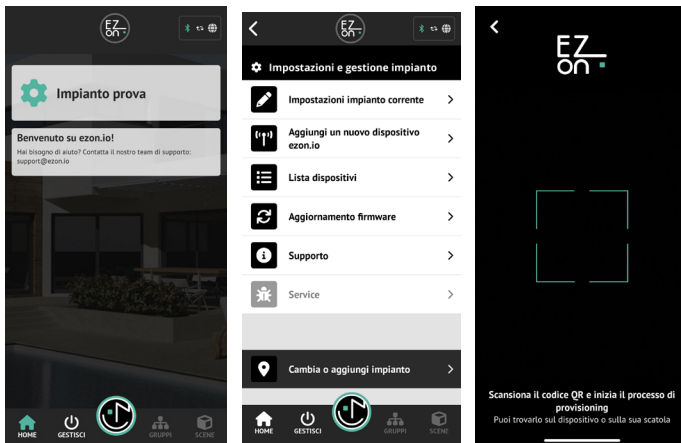
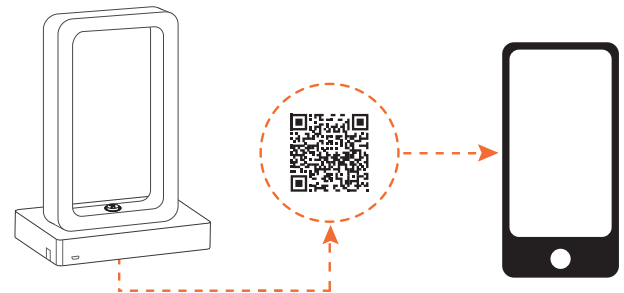




DOWNLOAD APP



Add a device

- Open the **ezone.io APP** and log in or, if you do not yet have the credentials to log in, proceed with registration.
- If there are no systems associated with your account yet you will be asked to create a new one, alternatively select the desired one from the list;
- From the initial screen, click on the symbol  corresponding to the name of the system.
N.B. If the system shown on the initial screen is not the one in which you wish to insert the new device, remember to modify it by clicking on the "Change or add system" item in the "System settings and management" menu;
- Select "Add a new ezone.io device" ;
ATTENTION: before proceeding with scanning the QR code, connect Sodio to a power socket and turn on the lamp with the appropriate button.
- Frame the pairing **QR Code** on the device. To be able to carry out this operation you must have given authorization to the phone's camera;
- Follow the instructions provided by the **APP**.



After configuring the lamp you need to enable the integrated button. To do this, click on  then "device list" . Open the desired lamp and click on the corresponding input, you will be redirected to the configuration page. Click on "LIST OF OPERATIONS" and then on "NEW OPERATION".

Select the lamp from the **OUTPUTS** and add new **ACTIONS** by clicking on "+" and then select from the list "invert the state of the output" and "dim the output". Click on "SAVE" the system will confirm the saving result.

The button configured in this way allows you not only to turn the lamp on or off, but also to adjust its light intensity by holding it down.

Furthermore, in the presence of other illunaluce lamps, it is also possible to program the lamp button so that it acts on multiple lamps at the same time. For example, with the same button you can turn multiple lamps on or off at the same time.

To control the lamp from the **APP**, click on "MANAGE"  and then select the device to control.

For further information regarding the use of the APP, refer to the online guide by scanning the QR Code.



APP INSTRUCTIONS

